

HOTEL OVERVIEW





ABOUT US

Hells Canyon Grand Hotel is so much more than just a place to sleep. The team is committed to delivering a grand and guest centric hospitality experience. Resort-like amenities and individualized service will always be included, and always at a great value.

It's important to us that our guests feel they are receiving a quality and unique experience. We are a community rich in historic culture and Lewiston has become known as a destination for fishing, hunting, exploring and now wine tasting. There's so much to uncover in the L/C Valley.

Enjoy free hot breakfast and earn Choice Hotel rewards while you stay. Be sure to plan your next event with us, with over 20,000 square feet of flexible meeting space.

Grand adventure awaits you!



HELLS CANYON: NORTH AMERICA'S DEEPEST RIVER GORGE



DISCOVER LEWIS-CLARK VALLEY



LEARN ABOUT LEWISTON, IDAHO

Location: Lewiston is situated in northern Idaho, at the confluence of the Snake River and Clearwater River.

History: Lewiston is one of the oldest settlements in the state of Idaho, dating back to the 1860s. It played a significant role in the gold rush era.

Climate: The city experiences a semi-arid climate with hot summers and cold winters. It is known for its distinct four seasons.

Economy: Lewiston's economy has historically been tied to agriculture, timber, and transportation due to its strategic location on major rivers.

Transportation: The Lewiston-Nez Perce County Airport provides air transportation, and the city is also accessible by road and river.

Nez Perce Tribe: The Nez Perce Tribe is closely associated with the region, and their cultural influence is evident in the area.

LCSC: Lewiston is home to Lewis-Clark State College (LCSC), a public undergraduate college known for its academic programs and athletic teams.

Gateway to Hells Canyon: Lewiston is considered the gateway to Hells Canyon, the deepest river gorge in North America, offering opportunities for outdoor adventures.

Recreation: Outdoor enthusiasts can enjoy activities such as hiking, fishing, boating, and camping in the surrounding natural areas.

Hells Gate State Park: Located near Lewiston, this state park offers outdoor recreational opportunities, including water sports and hiking.

Golf: You can play golf every month of the year on one of the four 18-hole courses in the valley. All courses offer full amenities and are challenging courses to play.

Hydroelectric Dams: Lewiston is near several hydroelectric dams along the Snake River, contributing to the region's power generation.

Annual Events: Lewiston hosts various annual events, including the Dogwood Festival, Hot August Nights, and the Lewiston Roundup.

LC Valley Wine Country: The Lewis-Clark Valley has a growing wine industry, and visitors can explore local wineries and vineyards.

Port of Lewiston: The city's port plays a crucial role in the transportation of goods, serving as an inland seaport.

Art Scene: Lewiston has a thriving arts community, with galleries, theaters, and events that showcase local talent.

Lewis & Clark: The Lewis and Clark Expedition passed through the area in the early 19th century, and there are historical sites commemorating their journey in and around Lewiston.





WELCOME
TO THE



HELLS CANYON
GRAND
HOTEL

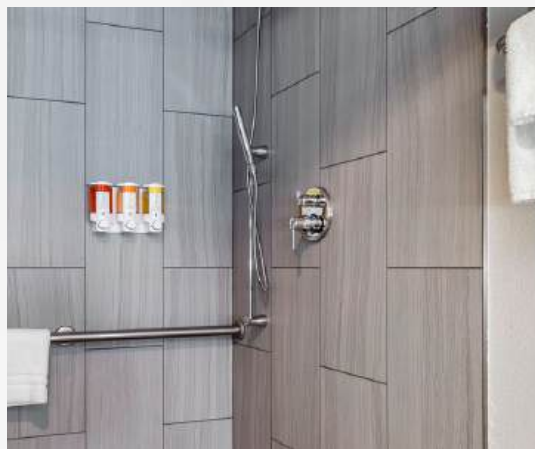




GUESTROOMS

All 143 guest rooms and suites feature:

- Complimentary Wi-Fi
- Comfortable work desks
- Plush pillow-top beds
- Oversized bathrooms
- Refrigerators
- Microwaves
- Keurig coffeemakers
- 55 inch flat screen TVs with Premium Cable TV
- Iron with ironing board
- alarm/clock radio
- USB plug in ports
- Eco-Friendly Bath Amenities





ROOM TYPES

- Premium Two Queen
- Premium Accessible Two Queen
- Premium Two Queen - Panoramic View
- Premium Single King
- Premium Single King - Panoramic View
- Junior Suite
- Executive Suite
- Governor Suite
- Family Suite





EVENT SPACE OVERVIEW

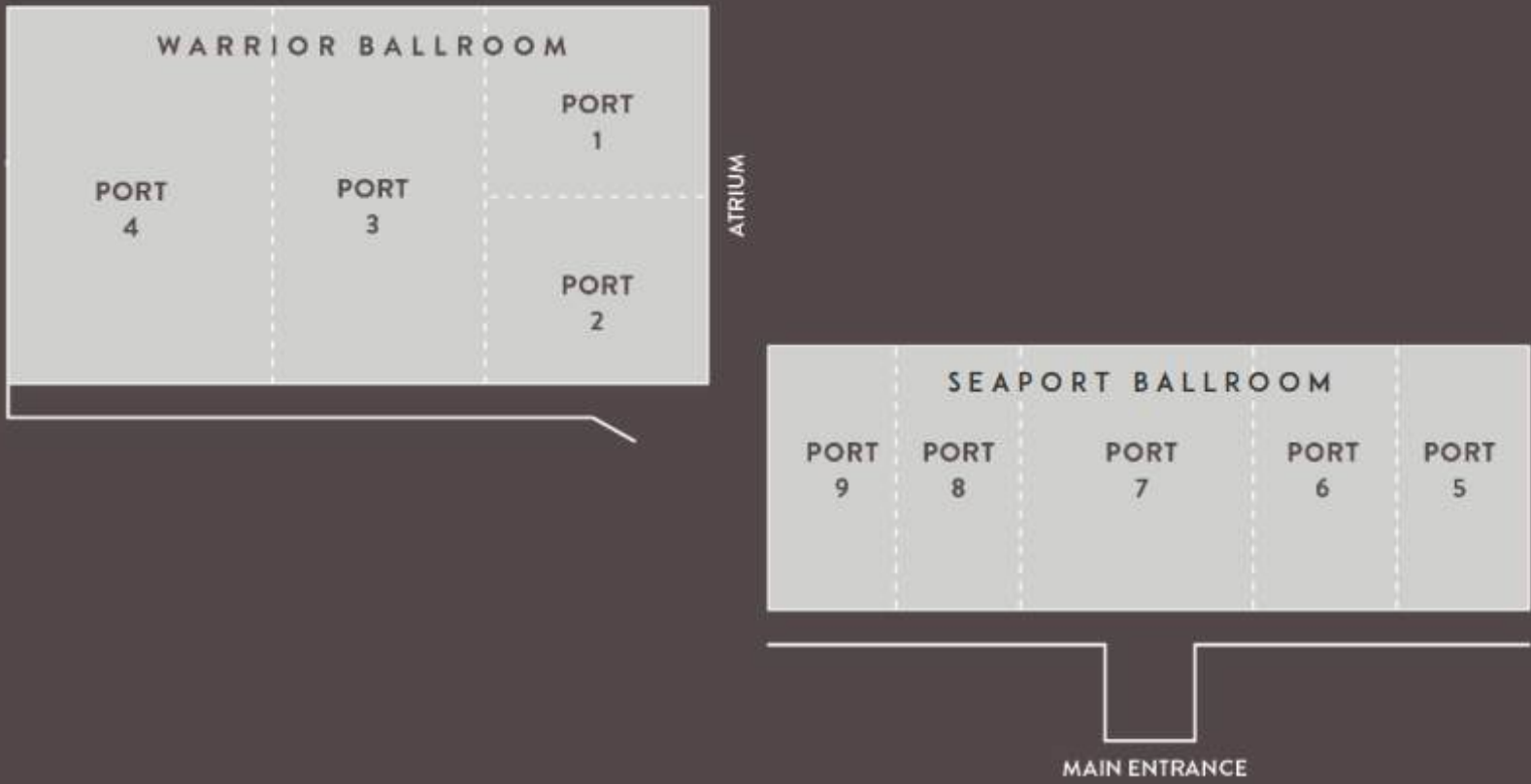
Meeting and banquet facilities at the Hells Canyon Grand Hotel include over 14,000 square feet of flexible indoor event space perfect for conferences and events.

The largest of our 12 meeting rooms, the Seaport Ballroom, can accommodate up to 400 people in a reception format. Professional staff is on-site to assist with all of your needs, including audio/visual equipment and full-service catering.

Meeting Planners - you can make your events more rewarding with Choice Privileges®. You'll earn 3 points per US \$1 spent on eligible charges, including meeting space, guest rooms, and food and beverages charged to a master bill, with no minimum spend requirement.



SCHEMATIC



CAPACITY



ROOM NAME	DIMENSIONS L x W	SQUARE FT.	CONFERENCE	U-SHAPE	CLASSROOM	RECEPTION	BANQUET	THEATRE	HOLLOW SQUARE
Warrior Ballroom	99' x 50'	5,304	YES *	YES *	145	300	240	425	YES *
Port 1	35' x 25'	875	32	22	24	60	40	50	30
Port 2	35' x 25'	875	32	22	24	60	40	50	30
Port 3	27' x 50'	1,350	36	30	48	70	64	150	45
Port 4	37' x 50'	1,850	40	40	50	120	96	175	50
Seaport Ballroom	151' x 40'	6,000	YES *	YES *	200	400	320	700	YES *
Port 5	23' x 40'	920	24	22	32	60	40	100	34
Port 6	29' x 40'	1,160	24	22	32	70	48	100	38
Port 7	50' x 40'	2,000	40	38	68	115	96	200	54
Port 8 & 9	50' x 40'	2,000	40	38	68	115	96	200	54
Salmon River Room	12' x 25'	312	16	----	----	----	----	----	----
Snake River Room	12' x 25'	312	16	----	----	----	----	----	----
Clearwater Ballroom	37' x 38'	1,406	40	36	45	120	72	100	48
Selway Room	25' x 32'	900	32	24	32	40	32	60	40
North Lawn	20 x 100 yards	18,000							

YES * We can accommodate your conference. Maximum capacity depends on your setup preferences.

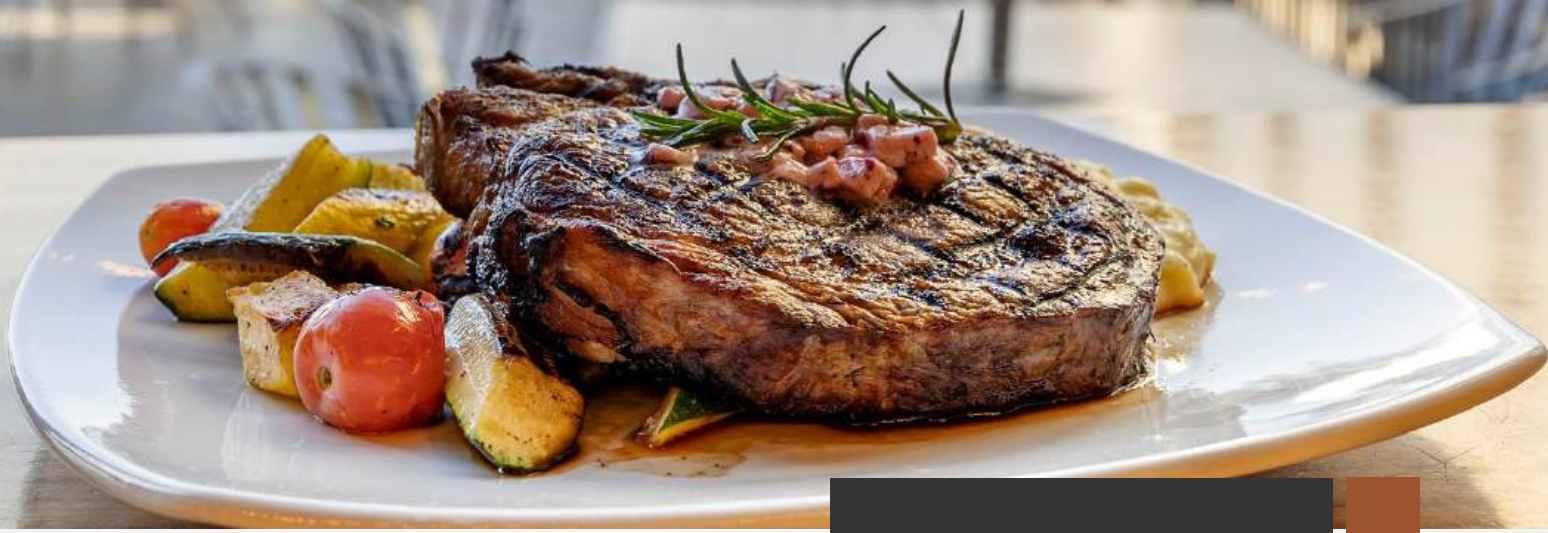
— This room has limited setup options.

CONTACT US

Sarah Brown

(208) 748 1057

sbrown@hcgrandhotel.com



CATERING

At Hells Canyon Grand Catering, we are dedicated to serving the highest quality cuisine for your events. Only the freshest ingredients are used, to make dishes that are sure to impress.

Whether you're looking for a formal sit-down dinner, casual buffet-style meal or food truck at your event, we have the options to suit your taste and budget. Our menus are packed with a variety of options, including vegetarian and vegan cuisine.

Our catering is available both on-site and off-site in a 50 mile radius.





OUTDOOR EVENTS

Our North lawn is 18,000 square feet and is the perfect venue for weddings, banquets, and picnics! This space is well maintained with landscaping and watering. Ask about our event rental company partnerships!



SELWAY ROOM

Our Selway room is perfect for smaller parties, meetings and receptions!

Dimensions: 25'x32'
900 square feet
View of lawn and valley

CAPACITY

32 in conference
24 in U-shape
32 in classroom
40 in reception
32 in banquet
60 in theatre
40 in hollow square



CLEARWATER BALLROOM

The massive windows and stunning views make our Clearwater Ballroom ideal for dinners and celebratory events.

Dimensions: 37' x 38'

1,406 square feet

View of valley, lawn and pool

CAPACITY

40 in conference

36 in U-shape

45 in classroom

120 in reception

72 in banquet

100 in theatre

48 in hollow square



WARRIOR BALLROOM

Our Warrior ballroom is ideal for large meetings, conferences and banquets. It can be divided into four sections for smaller events.

Dimensions: 99'x50'
5,304 square feet
Port 1 & 2: 875 square feet
Port 3: 1,350 square feet
Port 4: 1,850 square feet

FULL BALLROOM CAPACITY

145 in classroom
300 in reception
240 in banquet
425 in theatre



SNAKE RIVER ROOM

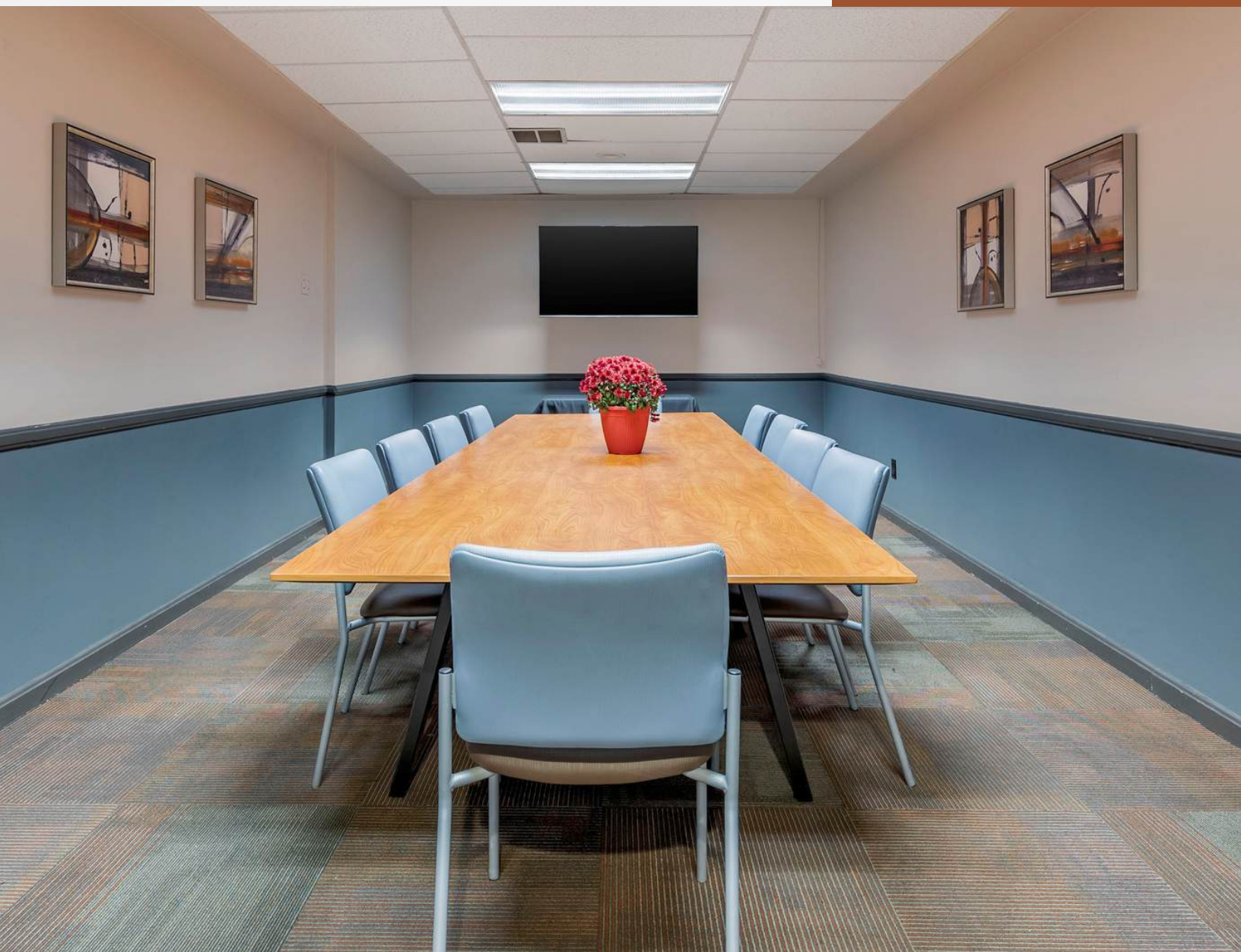
SALMON RIVER ROOM

Ideas come to life in our boardroom-style conference rooms! The Snake River and Salmon river rooms are next to each other and are the same size.

Dimensions: 12'x25'
312 square feet

CAPACITY

16 in conference



SEAPORT BALLROOM

Our Seaport ballroom is our largest ballroom and includes a stunning chandelier. It can be divided into five sections for smaller events.

Dimensions: 151' x 40'
6,000 square feet

Port 5: 23'x40'

Port 6: 29'x40'

Port 7, 8 and 9: 50'x40'

FULL BALLROOM CAPACITY

200 in classroom

400 in reception

320 in banquet

700 in theatre





MERIWETHER'S BISTRO

Indulge your senses in PNW inspired cuisine at Meriwethers' Bistro. Our menu features Certified Angus Beef and Cougar Gold Mac & Cheese. Enjoy views of the valley and Clearwater River both from within Meriwether's Bistro and from our expansive patio.

You'll taste the difference in quality with all of our sauces and gravies made in-house and all vegetables and meats cooked from fresh ingredients (never frozen). Even our tortilla chips and fries are house-made. Don't be surprised if your dishes include herbs from Executive Chef Kohn's own herb garden grown onsite.





MJ BARLEYHOPPERS

Savor the boldest brews in the Pacific Northwest at MJBarleyhoppers Brew House. Our brews pair especially well with our incredible pub-style menu.

We also feature 14 HD TVs, all at least 55" wide. Sports are always on, especially with our NFL Sunday Ticket & NBA League Pass subscriptions. Live bands play most Friday and Saturday nights!

Have some fun with friends at MJBarleyhoppers with Corn Hole, Foosball, and Pool!





POOL + FITNESS

Our onsite outdoor hot tub has a stunning view of the valley and is open year round. From late Spring thru early Fall, our pool is open and we have poolside restaurant service available.

Hotel guests have complimentary access to Snap Fitness across the parking lot which has a full-size gym, an indoor pool and indoor jacuzzi's.

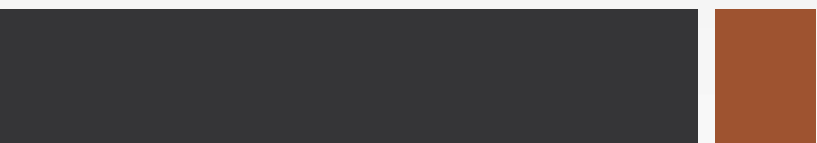




CHOICE PRIVILEGES®

Being a part of the Ascend® Hotel Collection, gives guests the benefit of earning points and access to free nights, member-only rates and more with the Choice Privileges®

With 12 distinct brands and more than 7,000 hotel locations worldwide (primarily in the U.S.), Choice Hotels® is never far from where our guests need to be. And the best part is its FREE to join and start earning rewards today!



Lewiston &

**WALT
DISNEY**



At the start of some Disney movies, there's a short 30 second animation of a river with an old sailing ship, a bridge with a steam train and then the familiar Disney castle and fireworks.

The scene before the castle reflects the Lewiston, Idaho/Clarkston, Washington area (separated by the Snake river). Steamboats were once used on this river. This is where Walt's wife Lillian is from and where they were married!



**SEE YOU SOON
AT THE**



**HELLS CANYON
GRAND
HOTEL**

The central graphic is a white circle containing the text "SEE YOU SOON AT THE" in a bold, brown, sans-serif font. Below this is the Hell's Canyon Grand Hotel logo, which consists of a stylized brown flame-like symbol to the left of the text "HELLS CANYON GRAND HOTEL". The word "GRAND" is significantly larger and bolder than the other words. A small silhouette of a fish is integrated into the letter "A" of "CANYON".